

MBE 4102 Group final year project 2015-2016

## Cell quantification using microengineering technology

Supervisor: Dr. Raymond Lam

email: rhwlam@cityu.edu.hk Tel: +852 3442 8577

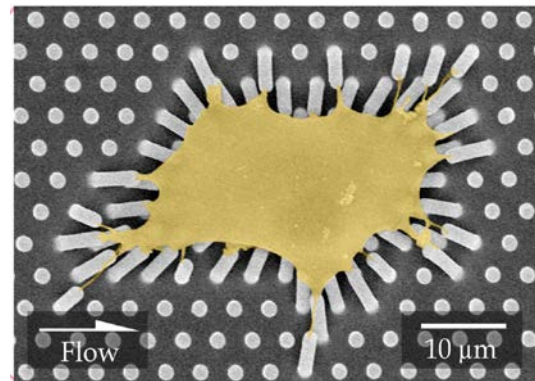
Web: [www.lamsresearch.com](http://www.lamsresearch.com)

Expected number of students: 3 – 5 students

Category: In-house

### Project description

This project aims at developing the students' hands-on experience related to the conventional cell research and microengineering techniques. Students will get involved in the research project and work with research staffs/PhD students in the group. Throughout the year, students will be trained with a couple standard techniques selected from our technique set including cell culture, stem cell differentiation promotion, analysis of cell signaling pathways, immune-staining, (RT-q)PCR, traction force measurement (**Fig. 1**), SEM, AFM, micro-fabrication and (bio-)microfluidics. Students will be firstly asked for their preferences and the related tasks will be assigned accordingly throughout the project year.



**Figure 1.** Cell traction of an micropost array.

**Students are encouraged to contact the supervisor for details of the project.**